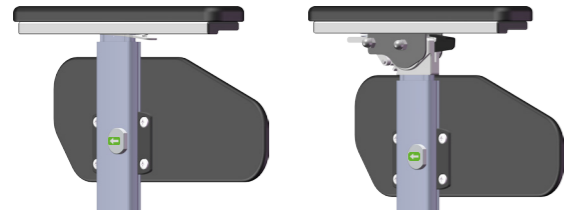




**HD** motion

ARMRESTS

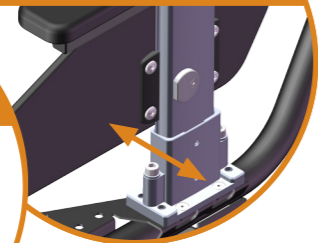


Armrests are easy to place and to remove, and can be adjusted in height and depth without tools. Low and angle-adjustable armrest models are available.

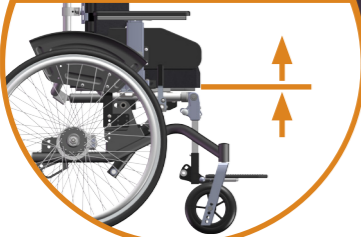
FLEXI-BACK



ADJUSTABLE SEAT WIDTH



SEAT HEIGHT ADAPTER

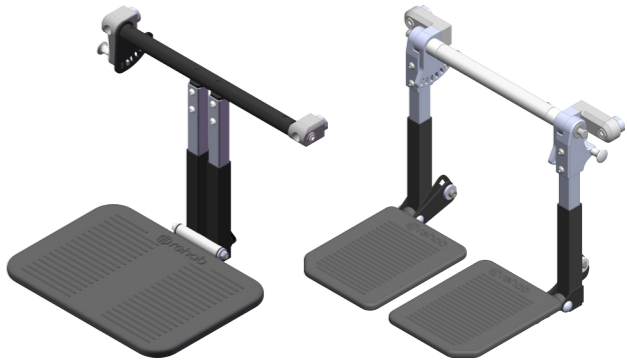


HD Motion is an all-new comfort wheelchair for children and youth and their individual needs.

With two chassis widths, two chassis lengths, and many convenient adjustments HD Motion can easily adapt to different body types and sizes.

HD Motion is built for an active lifestyle and the daily challenge of performing both indoors and outdoors.

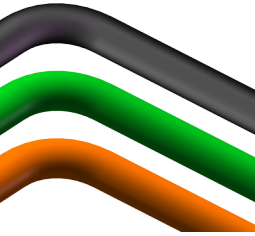
LEG RESTS



Two alternate legrests are available, separate and one-piece. The knee joints of the legrests can be adjusted in depth. Both models can be angled 80° to 140°.

COLOURS

HD Motion is available in three different colours for frame components: Metallic grey, green, and orange.



MANY CONFIGURATIONS

- 2 chassis widths
- 2 chassis lengths
- 3 backrest lengths
- 3 drive wheel positions

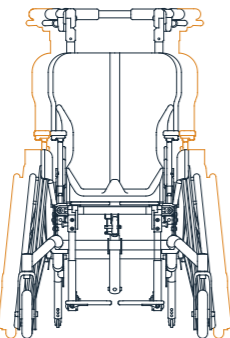
KNEE JOINT ADJUSTMENT



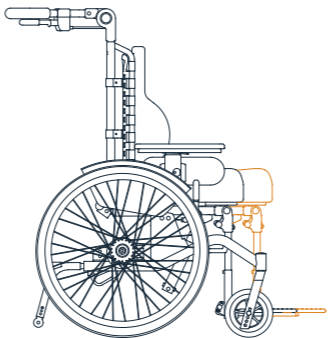
ADJUSTABLE PUSH BAR



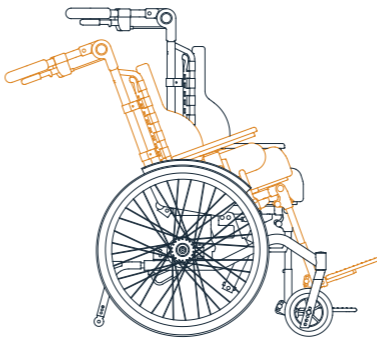
Transport model available with 16" drive wheels.



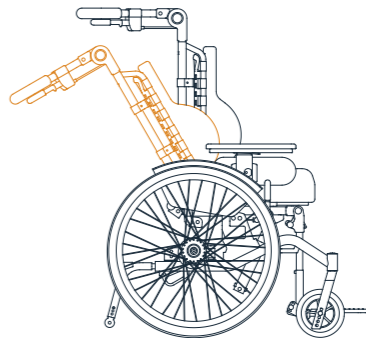
Seat width  
28-32 cm or 32-36 cm



Seat depth  
29-35,5 cm or 38-44,5 cm



Seat tilt  
0° - 30°



Back recline  
90° - 120°

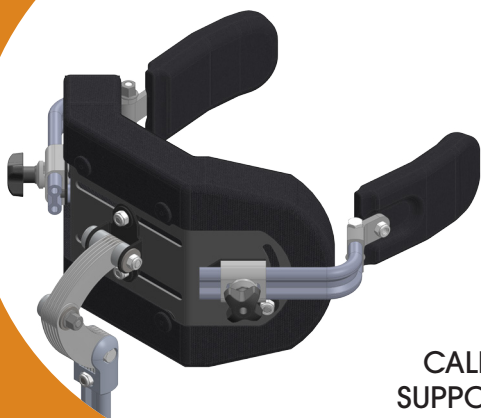




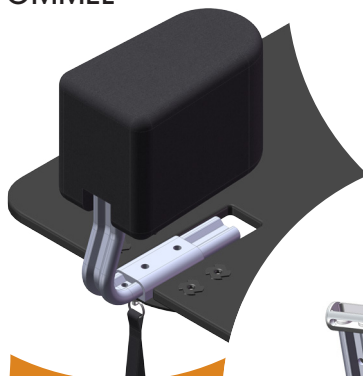
## ACCESSORIES

*A selection of accessories.*

HEADREST



POMMEL



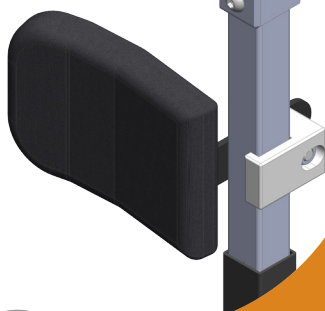
THORACIC SUPPORT



CHEST HARNESS MOUNT



CALF SUPPORT



TRAY TABLE



|                            |                |
|----------------------------|----------------|
| Seat width sw30            | 28-32 cm       |
| Seat width sw34            | 32-36 cm       |
| Seat depth K               | 29 - 35,5 cm   |
| Seat depth L               | 38 - 44,5 cm   |
| <i>(with back cushion)</i> |                |
| Seat height model 22       | 40/42/45/47 cm |
| Seat height model 16       | 42/45/47 cm    |
| Back recline               | 90 - 120°      |
| Seat tilt                  | 0 - 30°        |
| Leg rest angle             | 80 - 140°      |
| Max user weight            | 75 kg          |



Made in  
Sweden

**hdrehab**

[www.hdrehab.se](http://www.hdrehab.se) · [info@hdrehab.se](mailto:info@hdrehab.se) · +46(0)8-767 04 80

201214