

Tray Table and Support Table

A tray table is used as a countertop for users that cannot use a regular table. They can also be used in some cases to help position the user.

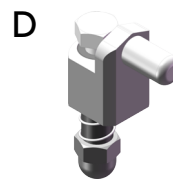
Three different tray tables are available for HD Motion:

- Tray table in plastic (A), with a recess for the torso. The tray table is used as a countertop for plate and mug when eating, or to place communication or activity devices. The table has coaming to prevent objects from sliding off.
- Tray table in wood (B) is also used as a countertop or supporting surface and also has coaming.
- Support table (C) has soft padding and can be used to actively support the arms, for example to stabilise the upper body or to give reassurance.

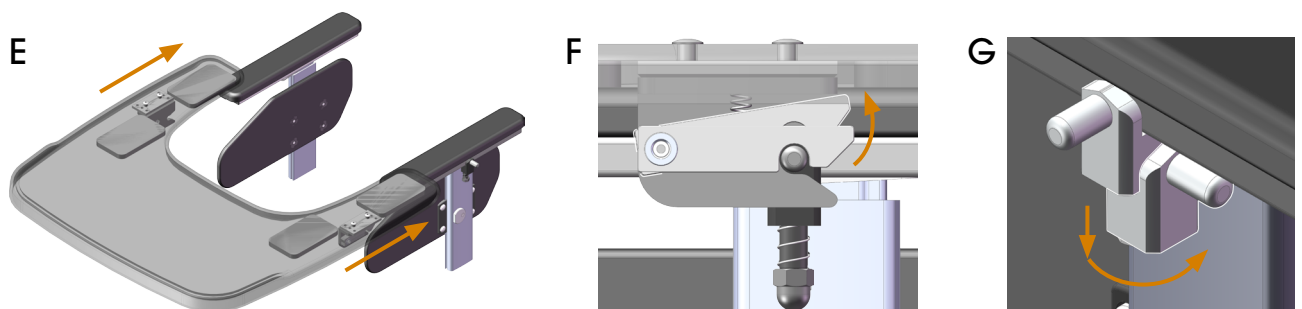


Mounting pins

The table is secured in place by mounting pins (D) which are attached to the rails on the underside of the armrests.



When the tray table is set in place (E) it locks on to the mounting pins. The tray table is released by grasping around the sides of the tray table to lift the locking levers (F). The mounting pins can then be turned in under the armrests (G).



Adjustments

The tray table can be adjusted in depth in two different ways:

1. Adjustment of the mounting pin position in the armrest rails (using a spanner).
2. Adjustment by moving the armrest pads forward or backward.

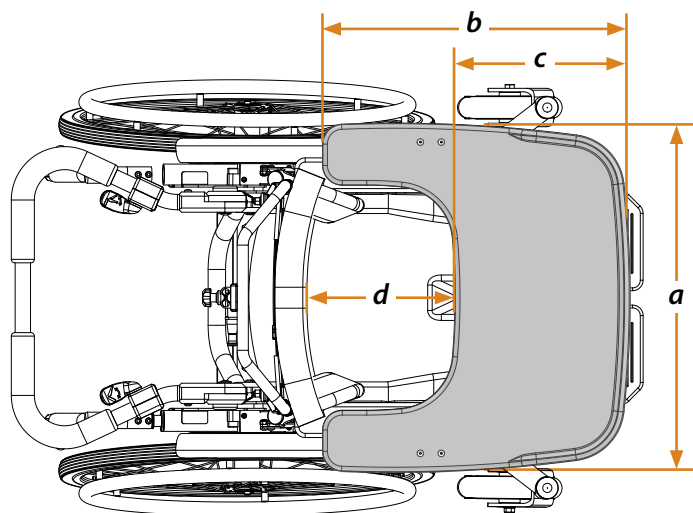
More information on how to make the adjustments is found in the User guide/ Mounting instruction *Tray Table and Support Table*, document number 96805-1.

Measurements

Table 1 - Measurements [cm]

	<i>a</i> width	<i>b</i> total depth	<i>c</i> forward depth	<i>d</i> max distance back cushion - tray*
Tray table plastic sb30	50	44	25	27
Tray table plastic sb34	54	49	25	32
Tray table wood sb30	50	41	22	27
Tray table wood sb34	54	46	22	32
Support table sb30	50	37	18	27
Support table sb34	54	42	18	32

* **Note:** Measurement is approximate, measured with a Solid back or lightly slackened Flexi-back at 90°.



Keep in mind

- **Note:** Restrictions may exist regarding locking the user in the wheelchair against their will. The prescriber is responsible to be informed on what rules and laws apply to the individual case.
- Pinching risks can arise if the user has involuntary movements and the arms come between the body and the tray table.
- When using a tray table there is a pinching risk when the backrest is raised up from a reclined position. Be aware of this.
- Tray table is not intended for heavy objects.
- Tray table should not be used as a support for the upper body if there is a risk for shoulder dislocation.

Article Numbers

All article numbers are included in the Ordering Guide, document number 96750-1.