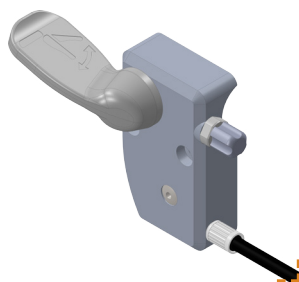


### Intended use

Lockable recline angle is used to set the back recline angle in a particular position.

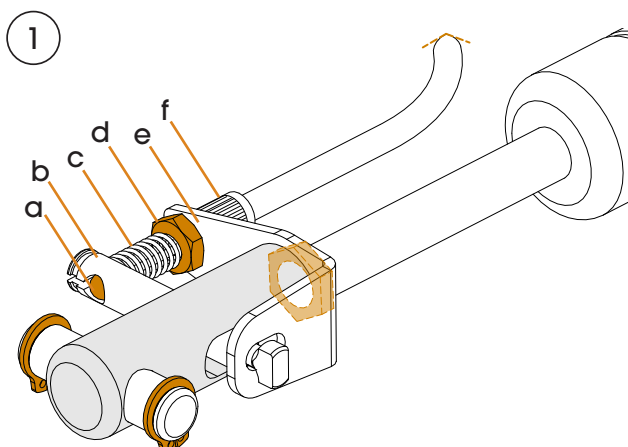
### Parts included

1 x cable control housing  
with lock screw, cable



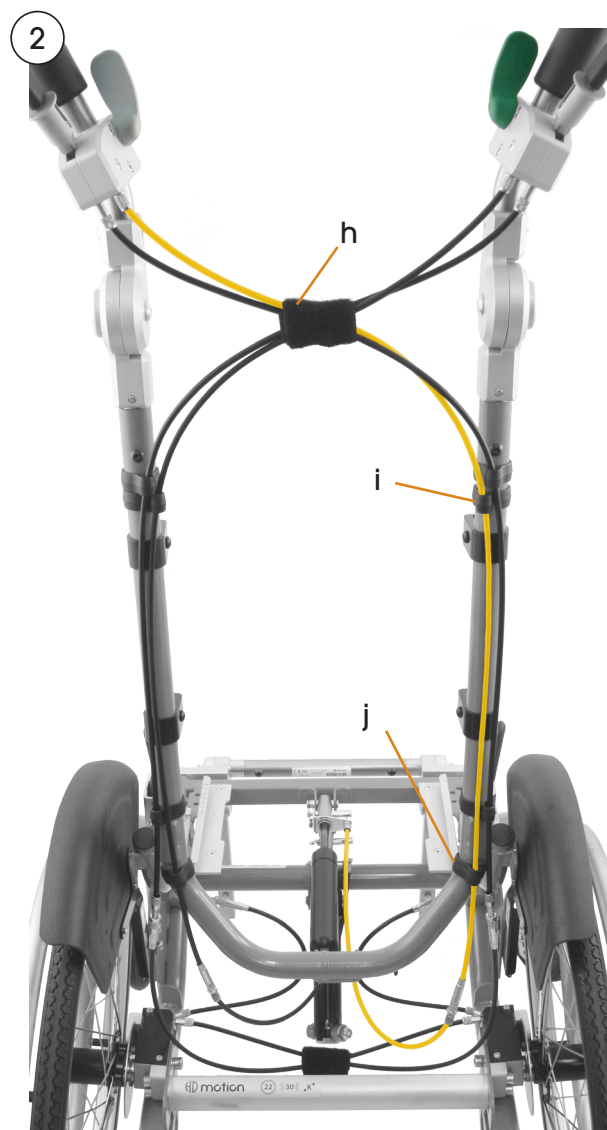
### Assembly

**Note:** This assembly requires technical proficiency.



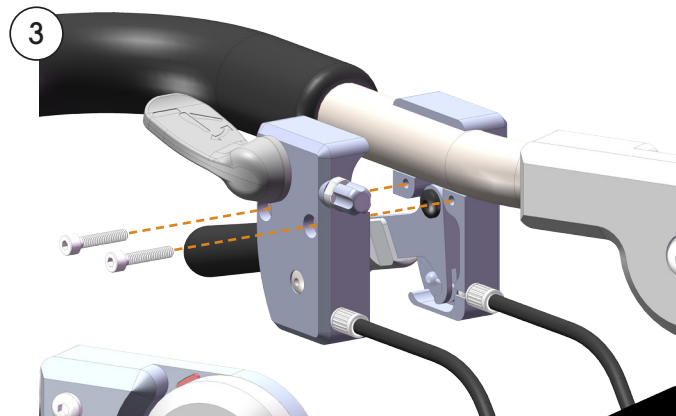
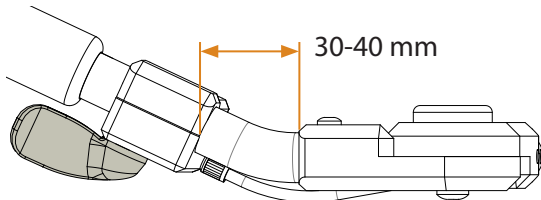
- 1 Remove the cable from the bracket under the seat as follows:  
Fully loosen the nut (d).  
Take the wire housing (f) out of the bracket (e) by pulling the end of the housing sideways to bring the wire out.  
Remove the wire nipple (a) from the pin (b).  
Keep the spring (c) as it will be re-used.

- 2 Remove the clips (i and j) that hold the cable to the back frame. Draw the cable out through the strap (h).



- ③ Remove the screws to release the cable control from the push bar.

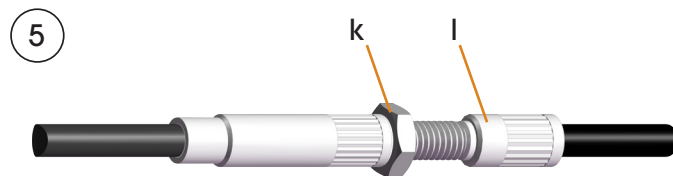
Screw the new cable control in place on the push bar. It should be placed 30-40 mm from the joint and angled outward 2-3°.



- ④ Connect the cable per ① and ② (reverse order). Remember to put the spring (c) in place.

- ⑤ Adjust the cable as follows:

First identify where the adjustment screw is under the back frame (see picture ②). Loosen the nut (k) on the adjustment screw and screw the sleeve (l) in or out to the correct adjustment. Tighten the nut.



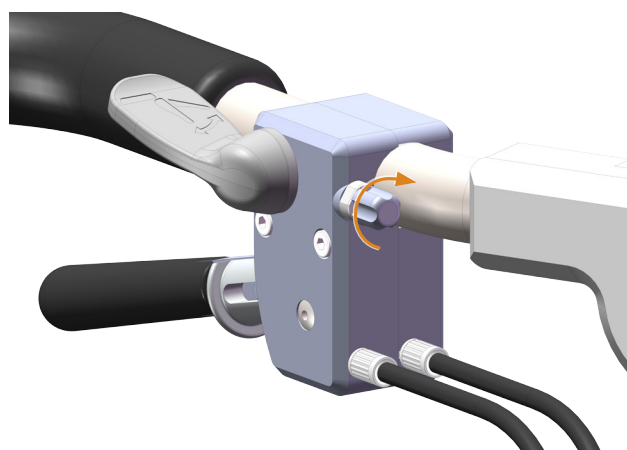
**Note:** There should always be some play in the lever so that the gas spring is never released unintentionally. The gas spring should release when the lever is fully depressed.

- ⑥ Check the recline function, brake function, and the cable routing.

## Use

Set the desired recline angle using the control. Then lock the position by screwing in the lock screw.

If a change of recline angle is desired, unscrew the lock screw. Set the new position using the control, then screw in the lock screw.



## Care instructions

Always replace damaged parts immediately. For more information see *Maintenance Instructions*, document number 96730-1.