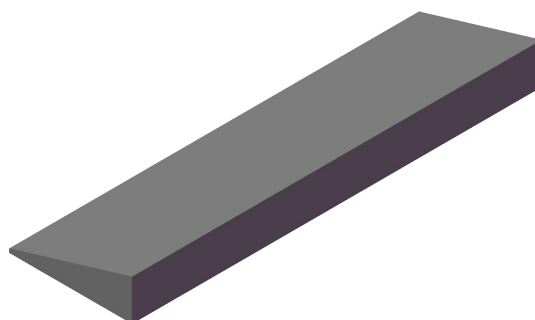


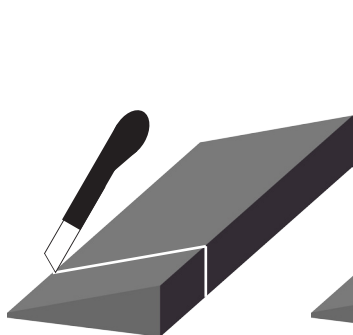
Back wedge

For some types of rotations or misalignments in the user's back the back cushion may need to be pushed forward on one side to provide optimal support. In these cases a back wedge can be used behind the back cushion to support the user's torso.

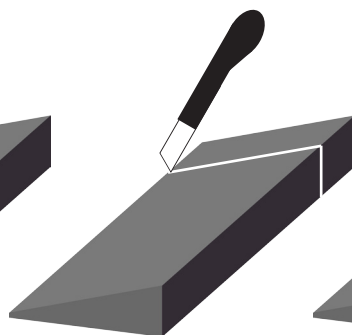
The wedge is made of a firm material that can be cut to the desired shape. It is attached to the back of the cushion with the included self-adhesive velcro.



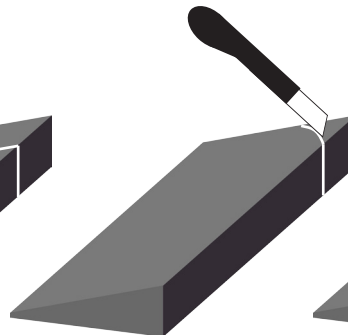
Suggested formats



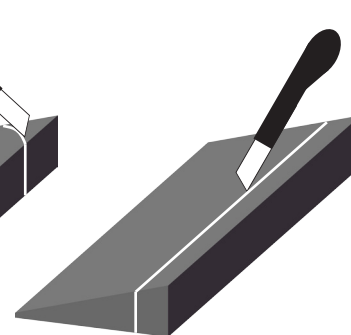
Cut off at bottom



Cut off at top



Corner cut off



Cut off lengthwise

Measurements

Table 1 - Measurements - Back wedge [cm]

Length	Width	Thickness (thickest part)
50	15	5

Keep in mind

- The back wedge must be tested/adapted by qualified personnel. An individual assessment must be done for each case. Incorrect use can lead to pressure, incorrect posture, etc. Regular checks of the user's position should be done to ensure the wedge is placed correctly.
- The wedge is intended to be used with a standard back cushion from HD Rehab.

Article numbers

Article numbers for the Back wedge are found in the Prescription form, art.nr. 95750-1.