

# Hand rims positioned inward

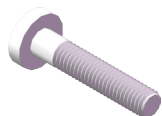
## User manual / Assembly instructions

Page 1 (1)

Art. no.: 15499-1, 15499-2

### Parts included

6 per wheel



6 per wheel



### Assembly



1. Remove the hand rim from the wheel by unscrewing the 6 screws
2. Reassemble the hand rim using the screws and spacers provided. The new spacer (8mm) replaces the longer spacer (22mm) from the original wheel. **Note that the shortest spacer (5mm) remains in place.**

### Care instructions

Always replace damaged parts immediately. For more information see the Maintenance Instructions, art. no. 95730-1.