

Conversion kit - Pad for knee joint HD Balance

User manual / Assembly instructions

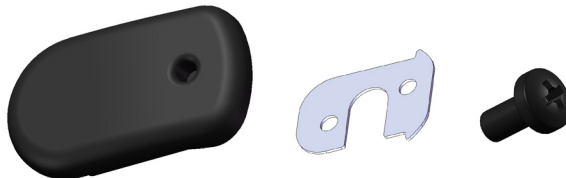
Page 1 (2)

Art nr: 63745-1

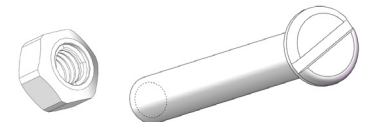
Kit for changing from old version to new version of pad for knee joint.

Parts included:

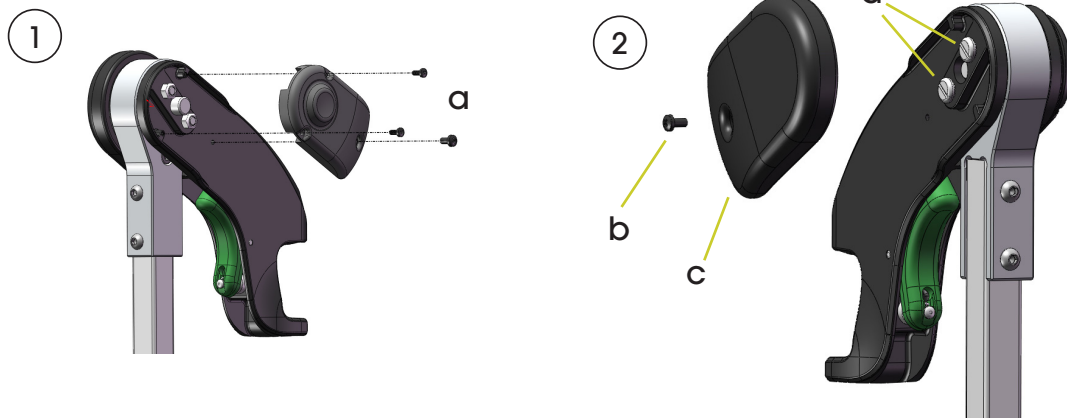
2x



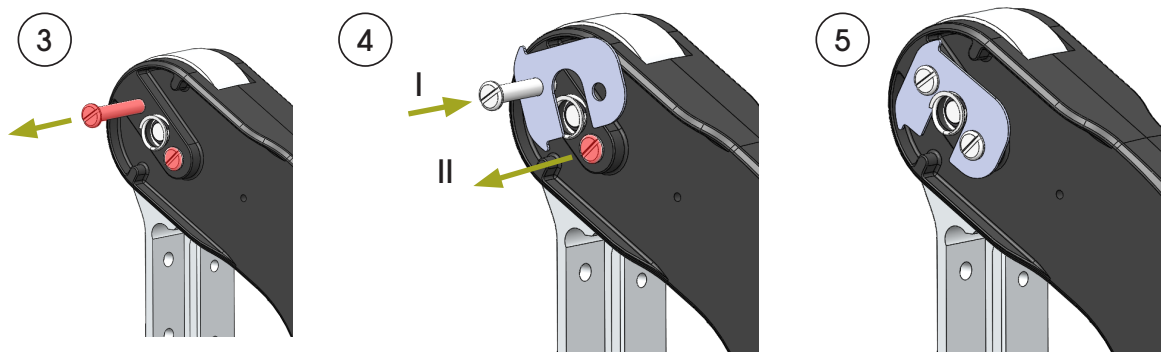
4x



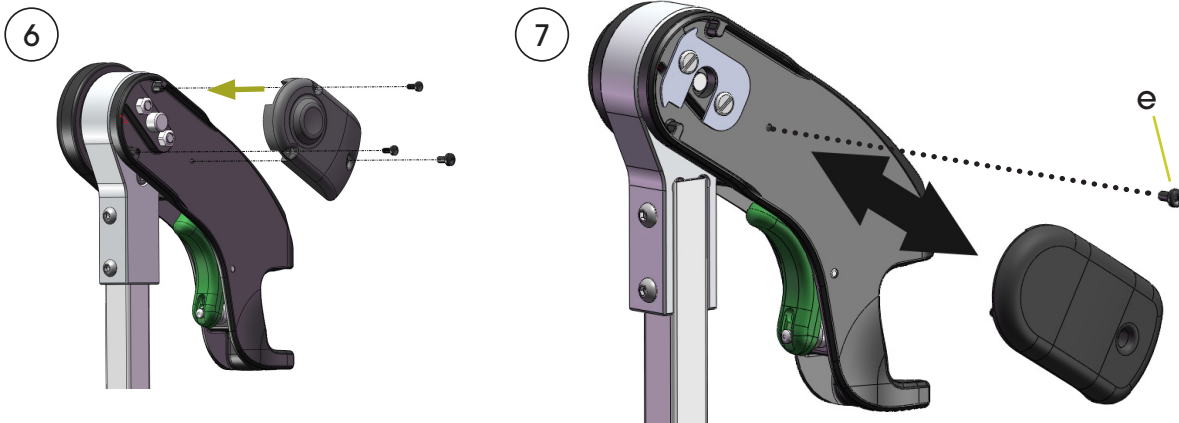
Assembling



1. First dismantle the outer cover by removing the screws (a).
2. Remove the old pad by completely loosening the screw (b) and then push the pad (c) slightly forward and then remove it. The screws (d) must be replaced with screws supplied in the kit. These are changed one at a time while attaching the supplied plate to the knee joint.



3. Loosen one of the screws completely.
4. I) Place the plate according to the picture and screw in one of the new screws without tightening.
II) Then also replace the other screw.
5. Tighten the screws with a moderate force. If the screws are overtightened the mechanism in the knee joint can be affected.



6. Fasten the outer cover by tightening the screws carefully. Avoid deforming the material of the cover.
7. I) The new pad is mounted by pushing it forward from behind.
II) Tighten the screw (e) carefully.

Care instructions

The pads can be cleaned by wiping with soap and water. For further information, see the Maintenance Instructions 95730-1.