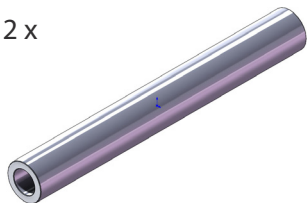


Parts included

2 x



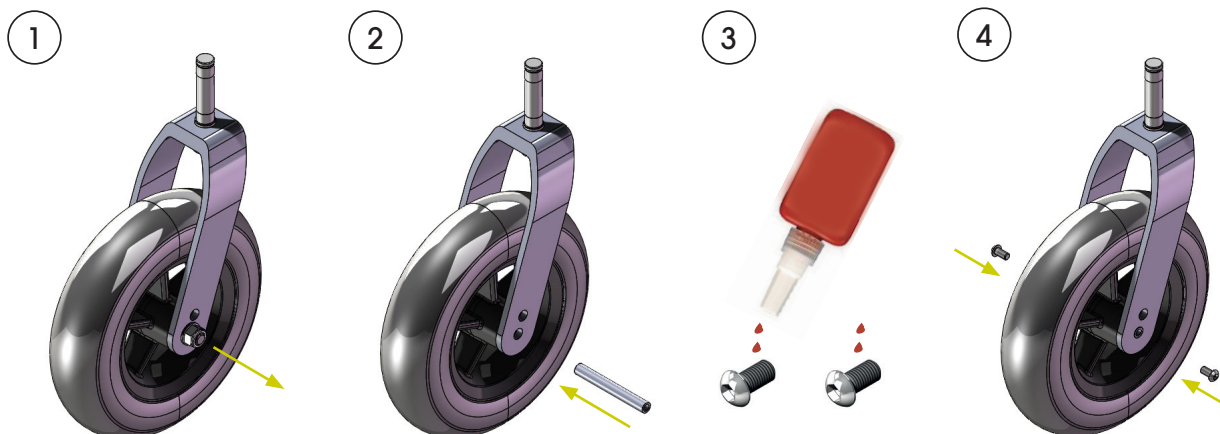
4 x (K6S M5x10)



Assembly

Note: The assembly must be performed by authorized personnel only.

Assemble the axle pins as follows:



1. Disassemble the current bolt, nut, and washers (the fork does not need to be removed from the wheelchair). These parts will not be re-used.

2. Fit the axle pin through the fork and castor.

3. Apply 2 drops of high strength threadlocker to each screw.

4. Drive a screw into each side of the axle pin. Make sure the screws are fully seated.

Repeat these steps with the other castor.

Use and Care instructions

See the Maintenance Instructions, art. no. 95730-1. Always replace damaged parts immediately.