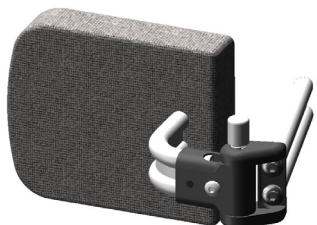


Parts included

1 x

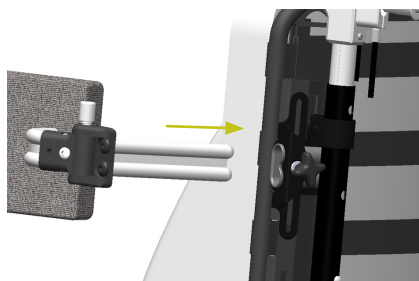


(Available in different sizes and designs. Shown here is Thoracic support Standard, narrow position, left.)

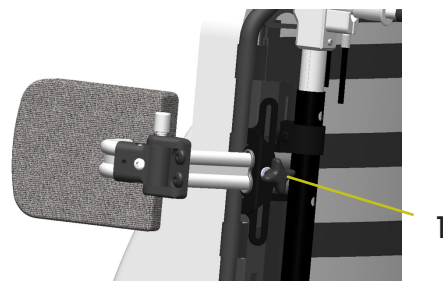
Assembly

The thoracic support is fitted to the mount as shown.

①



②

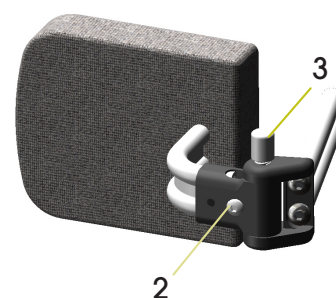


- ① Slide the support into the mount.
- ② When the support is in the desired position tighten the knob (1) to lock it. Use moderate force to tighten the knob.

Adjustment of the angle

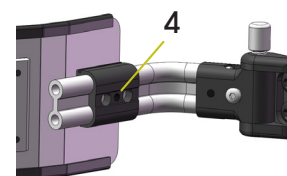
To be done by duly qualified person.

1. First make sure that the support is in a fixed position and then loosen the screw (2) a little.
 2. Secure the thoracic support in the mount and swing it to the desired position.
 3. Tighten the screw (2) securely to lock the support in position.
- Some models can be adjusted in depth with a set screw (4) underneath the cover.



Use

Use the button/knob (3) to unlock and swing away the support when necessary. **Note:** Try to relieve any force (from the user) pushing on the thoracic support as the button may be hard to push otherwise.



Care instructions

Hard parts shall be cleaned by wiping with soap and water. Covers are washed according to the instructions inside them.