

# ASSEMBLY INSTRUCTIONS



## One hand mechanism, legrest

Art. nr. 16 775-1

18 775-1

26 775-1

Is used when the wheelchair is equipped with footbox or footplate to make it possible for one person to adjust the leg rest angle on his/her own.

### INSTRUCTIONS:

1. Undo the screw (a) and pull it out, then remove the legrests by pulling out the telescopic arm (b). See figure 1.
2. Disassemble the standard mechanisms on both sides by unscrewing the knobs (c) on the outer side of the frame. Then remove the circlips (e) and pull out the pin unit (f). The spring (g) falls out.

Put away the standard parts and use the parts for the one hand mechanism in the following part:

3. Place the spring (h) between the plates (d or n), on either the left or right side of the frame depending on what side the adjustment knob should be, see figure 2.
4. Push the pin unit (i), the one with threads, through the holes and the spring from the inside of the frame.
5. Attach the knob (j).
6. Pull the spring (h) slightly to the side and mount the circlip (k) in the groove on the pin (i).
7. Make sure that the O-RING (l) is mounted on the pin (i).
8. Place the other spring (m) between the plates (d or n) on the opposite side as the first one.

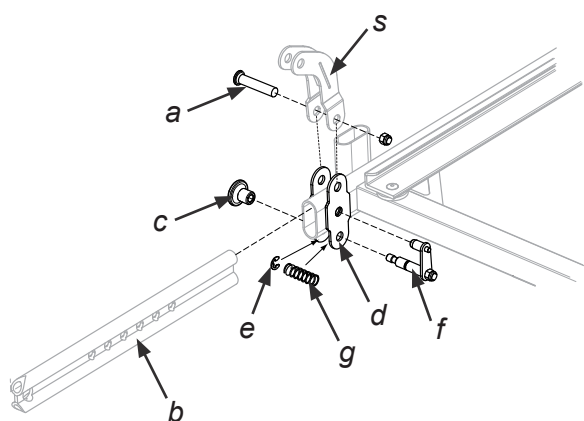


Figure 1

9. Place one side of the push bar (o) over the pin unit (i).
10. Push the other pin unit (p), the one without threads, through the holes and the spring (m) from the outside of the frame, and mount it on the open end of the push bar (o). Make sure that the O-RING (q) is mounted on the pin (p).
11. Pull the spring (m) slightly to the side and mount the circlip (r) in the groove on the pin (p).
12. Mount the telescopic arms (b) into the frame.
13. Lock the links (s) in the plates (d,n) on the frame with the screws (a) and locknuts. Adjust the screw to a suitable force for easy adjustment of the leg rest angle.
14. Check that the mechanism works properly.

### THE KIT INCLUDES:

1. PIN UNIT, NOT THREADED (p)	1PCS
- Push pin	
- Locknut	
- O-ring	
- Arm with pin	
2. PIN UNIT, THREADED (i)	1PCS
- Push pin	
- Locknut	
- O-ring	
- Arm with pin	
3. PUSH BAR (o)	1PCS
4. SPRING	2PCS
5. KNOB	1PCS
6. CIRCLIP	2PCS

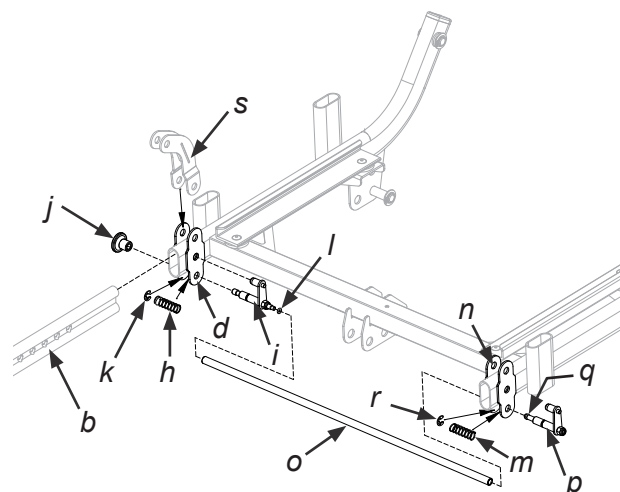


Figure 2