

# ASSEMBLY INSTRUCTIONS

## SEAT ELEVATION ADAPTOR

Art.No. 14 190-1



The kit contains the following:

Pos.	Art.No.	Name	Quantity
	<b>14 190-1</b>	<b>SEAT ELEVATION ADAPTOR</b>	
1		Adaptors	2
2		Bolts	2
3		Locking nuts M10	2
4		Screws M6x30	2
5		Washers	4
6		Locking nuts M6	2
d		Extended tilt bar	1

The seat elevation adaptor can be fitted to HD wheelchairs; models 500, 600 and 650.

The adaptor raises the entire seat unit by 5 cm. After fitting the adaptor, the wheelchair should be checked to make sure that the tipping risk has not become excessive. This can vary from one wheelchair to another. Extended tipping protection/bars can be fitted to the wheelchair for safety reasons.

Model HD 600 is more stable and is less at risk of tipping.

NB! Increased seat tilting cannot be combined with this adaptor.

**In order to fit this adaptor, drilling work must be carried out in the wheel frame, and the tilt bar must be replaced. These tasks must be done by authorised personnel.**

The seat unit must be loosened from the wheel frame so that the adaptor can be fitted.

### Instructions:

**1.** Remove the seat unit and the standard tilt bar as follows.

- Remove the armrests, legrests and removable cushions from the wheelchair.
- Pull out the backrest folding pin and fold the backrest forwards so that the gas spring hangs freely.
- Loosen the tilt bar (d) from the seat frame by removing one of the circlips (a) and pulling out the pin (b); see Figure 2 (use circlip pliers).

Note that the seat unit will be able to fall forwards or backwards completely freely. Therefore only pull the pin out far enough for the gas spring to be loosened (the gas spring can hang on the wire, which does not need to be disconnected). Then pull out the pin completely, at the same time as supporting the seat unit.

- Remove the circlip (m) and pull out the pin (n) on both sides; see Figure 1.

- The seat unit can now be lifted off.

NB! The wire for the tilt locking unit (f) can remain in place if you carefully position the seat unit directly in front of the wheel frame. Ensure that the wire is not damaged. If you have to disconnect the wire from the tilt locking unit, make sure that you do not loose the spring (g). When the wire is refitted, the wire control unit must be adjusted; see the special instructions for this.

- Loosen and remove the lower stop ring (c).
- Push in the locking pin (e) and pull the tilt bar upwards.

Further instructions overleaf.

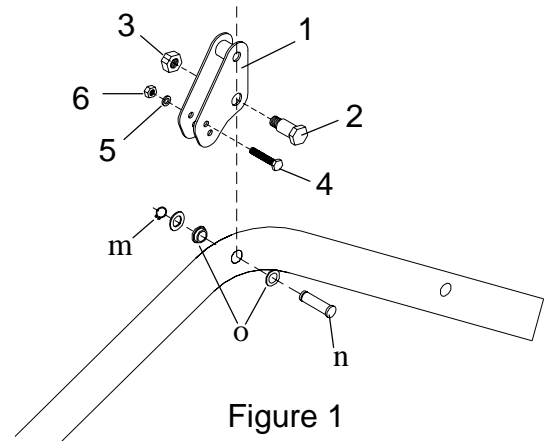


Figure 1

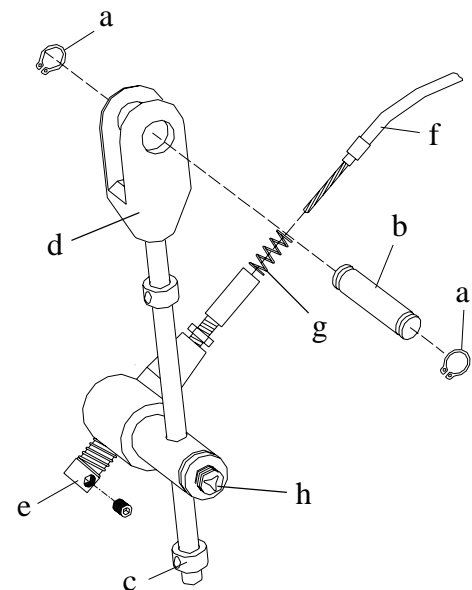


Figure 2

**Continued from previous page:****2. Fit the adaptor:**

- Remove the plastic bushings (o) from the wheel frame.
- Position the adaptor (1) as shown in Figure 3 and fit the bolt (2) and the locking nut (3).
- Tighten the nut, but not excessively; it must still be possible to turn the adaptor.
- Adjust the adaptor as shown in Figure 4 so that the hole, diameter 10, is directly above the attachment point in the wheel frame. The upper hole with a diameter of 6 mm must be in the centre of the side bar of the wheel frame.
- Drill using a 6 mm drill bit through this hole straight through the frame, but only on one side of the wheelchair.
- Fit the screw (4), the washer (5) and the locking nut (6).

- Adjust the adaptor on the other side, preferably using a bar (10 mm) straight through both adaptors so that these become completely in line. Drill and fit screw, washer and locking nut.

**NB! This is important.**

**If they are not positioned correctly, you may have problems fitting the seat unit.**

- Tighten the nuts (3) and (6) securely.

**3. Fit the extended tilt bar as follows:**

- Push the tilt bar into the tilt locking unit at the same time as pushing the locking pin (e) in; see Figure 2. If the tilt bar does not move easily, you can loosen the driving brake (h) by unscrewing it a turn or two. Ensure that the tilt bar locks into one of the holes approximately in the middle of the bar.

**4. Fit the seat unit to the adaptors.**

- This is made easier if you use two dowels, long pins or tools with a diameter less than 10 to fix the seat unit in the holes of the adaptors.
- Fit the pins (m) and locking rings (n) as shown in Figure 3.
- Adjust the angle of the seat unit forwards so that the attachment fork of the tilt bar fits into the fastening on the seat frame.
- Insert the pin, but only through one side of the attachment fork.
- Fit the gas spring holder into the attachment fork and then push the pin in completely.

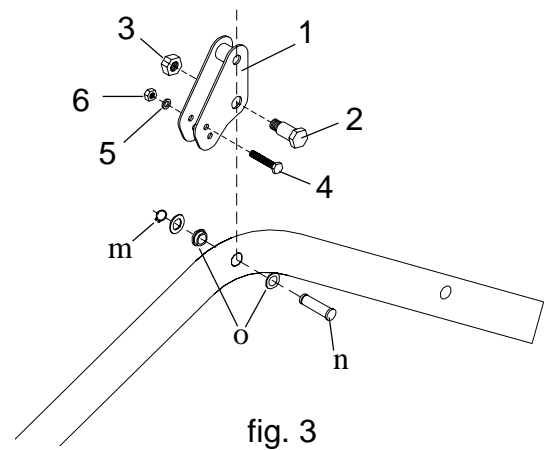


fig. 3

**5. Fit the lower locking ring as follows:**

- Fit the locking ring into lowest threaded hole of the tilt bar using a stop screw, M6x12, through the non-threaded hole of the locking ring.

- 6. Check thoroughly that everything works properly and that none of the components have become damaged, especially wires.**

- 7. In certain cases the adaptor can also be fitted with the fitting hole for the seat unit, Y, Figure 4, moved backwards (about 2 cm).**

For assembly in this way, use the lower hole, X, instead when the 6 mm screw is to be fitted through the wheel frame. This setting may be particularly useful on wheelchair model HD600.

**NB! When the adaptor is fitted in this way, check extra thoroughly to ensure that no tipping risks are created.**

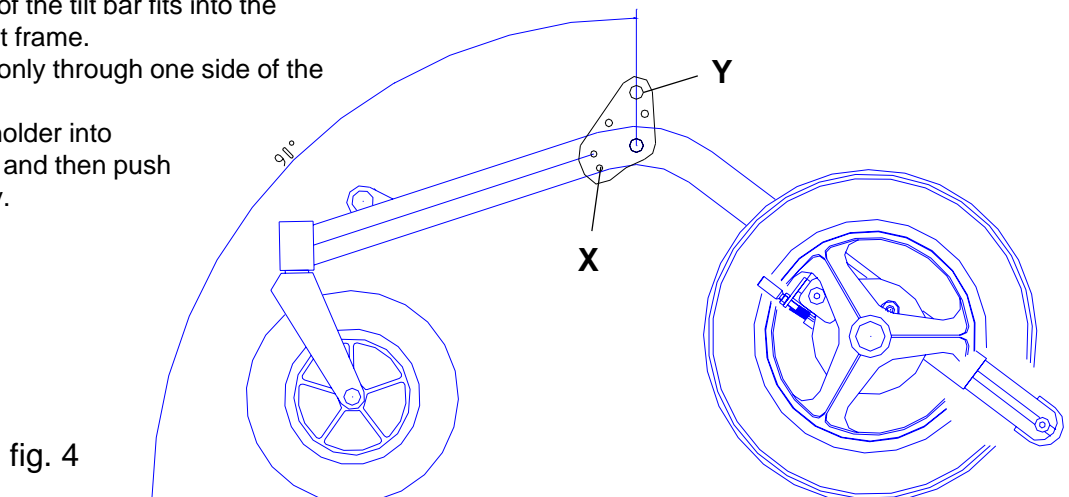


fig. 4