

# ASSEMBLY INSTRUCTIONS

## EXTENDED GAS SPRING



### Art.No.

**11 105** Gas spring, extended,  
complete with holder

**Provides increased backrest angle  
adjustment of + 30°**

standard angle adjustment = 90° - 120°

increased angle adjustment = 86° - 136°

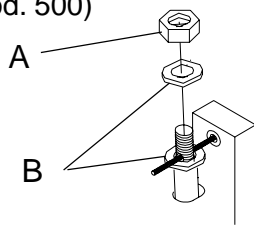
**NB!** To prevent damage to the backrest control wire when the backrest is folded fully forwards, the backrest control wire should also be replaced. Use the same length as for the tilt locking unit wire.

Art. No. 11 276-5 Wire/Housing tilt unit, standard

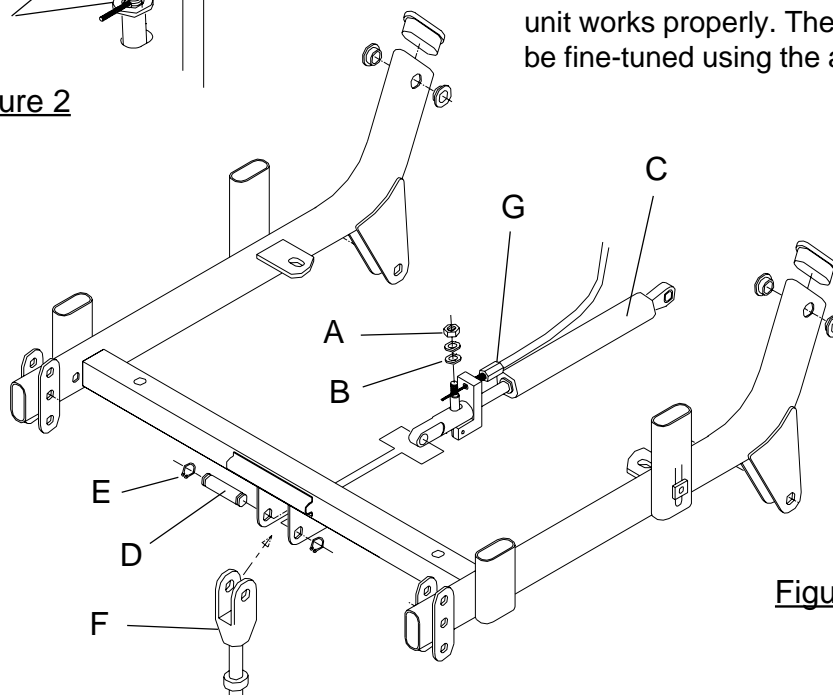
**NB!** Increased backrest tilting also creates an increased risk of tipping! Fit extended tipping protection/bars to the wheelchair for safety reasons.

Art. No. 14 680 Tipping protection, extended, pair (mod. 600)

Art. No. 14 580 Tipping protection, extended, pair (mod. 500)



**Figure 2**



**Figure 1**

### INSTRUCTIONS

**Replace a standard gas spring with an extended gas spring:**

**NB!** The extended gas spring is to be fitted with the holder's wire input point facing upwards; see Figure 1.

1. Free the gas spring from the back frame.
2. Loosen the nut (A) and remove the gas spring wire (C).
3. Loosen the old gas spring by removing one of the circlips (E) as shown in Figure 1. (use circlip pliers).
4. Pull out the pin (D) and remove the gas spring.

**NB!** The same pin also keeps the tilt bar (F) in place. Assembly is easier if the pin remains in one side of the attachment fork of the tilt bar.

5. Fit the long gas spring with the same pin and circlip. **NB!** Turn the holder as shown in the picture. **NB!** Do not open the circlip excessively, which creates the risk of it becoming deformed and loose.

6. Fit the wire. **NB!** The wire must be sandwiched between the washers (B); see Figure 2.

Check the tension of the wire and that the control unit works properly. The release mechanism can be fine-tuned using the adjusting screw (G).