

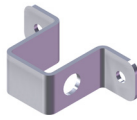
Art. no.: 65986 / 65987

Parts included

1 x



1 x



1 x

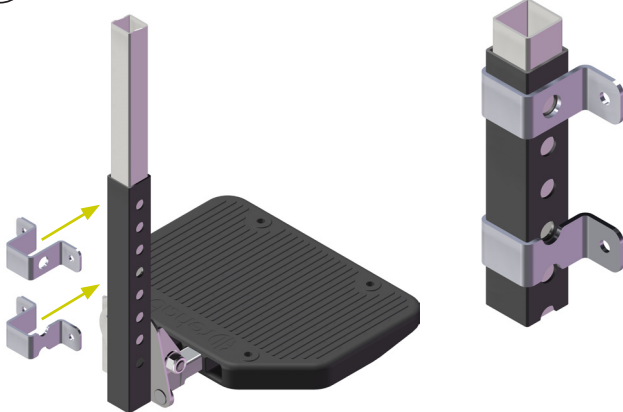


4 x (MRX M5 x 12)

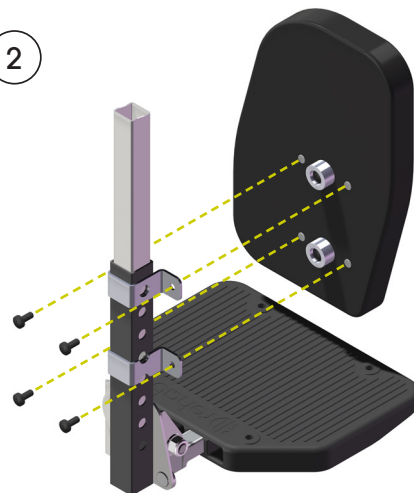


Assembly

①



②



1. Push the upper and lower mounting brackets on to the footplate holder. **Note positions:** The top bracket fits over the first hole on the tube and the lower bracket fits between the 4th and 5th holes.

2. Fasten the footrest side in place with 4 screws.

Care Instructions

The footrest side can be cleaned by wiping with soap and water. See the Maintenance Instructions, art. no. 95730-1. Always replace damaged parts immediately.